

January

Celebrating the New Year with Friends, Fun & Fellowship



January 5 - New Year's Party
Celebrate 2012 with us!

January 12 - Prayer Week - Laurie Atz
Chi Alpha Ministry at the IPFW Campus

January 19 - Kids Say the Darndest Things
A Video With Art Linkletter

January 26 - BINGO

Please join us every Thursday at 11:30 a.m. in the Gym, Entrance 5.
If you need transportation, please contact Bob Harris, 493.4974

Monday Fellowship Breakfast
Meet at 8 am

January 9 - Cosmo's at Marketplace of Canterbury

January 16 - Cracker Barrel on Maysville Road

January 23 - Bob Evans on Maysville Road

No breakfast on January 30

See, I am doing a new thing! Now it springs up; do you not perceive it? I am making a way in the desert and streams in the wasteland.
Isaiah 43:19 NIV



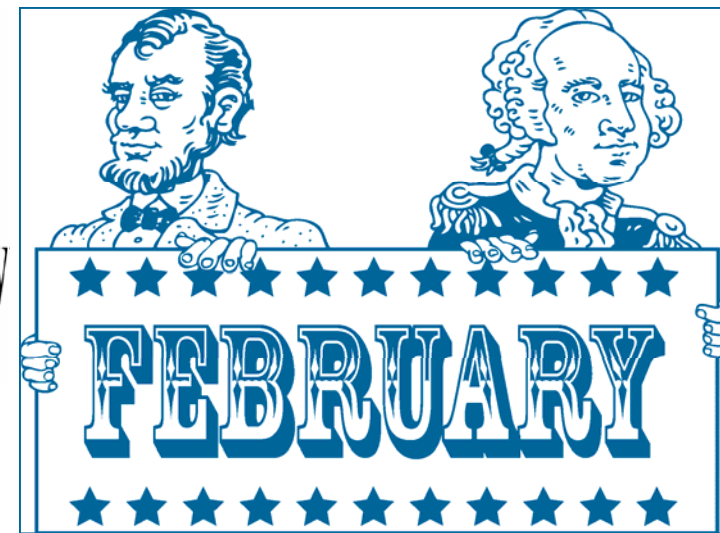
LOOKING for A BIBLE STUDY?

Find one every Wednesday Morning at 10 am in Room 40

Groundhog Day



Ernie Weaver & Chenaniah
February 2
Groundhog Day



Valentine's Day
Sing God's Love Songs
with Marlene LeMon
February 16

February 2 - Ernie Weaver & Chenaniah
50s Parody Songs

February 9 - God's Greatest Command
Tom Neddersen, Pastor, Agape Assembly

February 16 - God's Love Songs, Marlene Le Mon

February 23 - Presidential Fun

Please join us every Thursday at 11:30 am In the Gym, Entrance 5.
If you need transportation, please contact Bob Harris, 493.4974

Monday Fellowship Breakfast
Meet at 8 am

February 13

Cosmo's
Marketplace of Canterbury

February 20

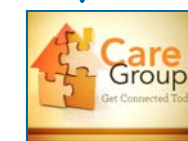
Cracker Barrel
Maysville Road

February 27

No breakfast

Host, Lead, or Attend a Small Group in 2012

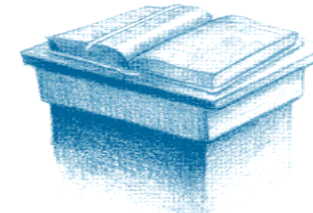
Find out how by attending
Care Group Orientation
Saturday, February 4,
nine to noon in RM 37 A&B.



At the heart of a strong church are strong relationships. Join our team of Care Groups. Discover the joy of encouraging, growing together, caring for and reaching out to one another. You will be equipped with all the tools you need.

Wednesday Mornings
at 10 am in room 40

Study the Bible
with us

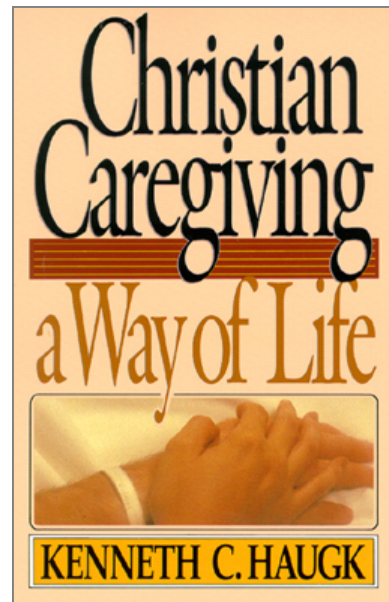


He answered: "Love the Lord your God with all your heart and with all your soul and with all your strength and with all your mind"; and, 'Love your neighbor as yourself.'" Luke 10:27 NIV

21st Century Christians as Salt and Light

“You are the Light of the world...you are the salt of the earth.”

Jesus called each of us to be salt and light in the 21st century.



Plan now to join this special 10 week class. Excellent instruction, practical discussions, along with quality practice and skill development will prepare you to be a 21st Century Christian. You will learn powerful and simple skills that every believer can use to engage their world (family, neighbors, strangers and co-workers) in a positive way for the kingdom of God. The class is free and begins January 15th. Sign up now and get your book ordered (\$12).

Coming in 2012

February

Ernie Weaver & Chenaniah - 50's Parodies

Marlene Lemon - God's Love Songs

March

Alan Godsey—Gospel Styling

April

Buddy Liles—In Concert

May

Johnny Garrison—Music of Life

First Assembly of God, Fort Wayne, IN

January February 2012

Boomers & Beyond

Anyone 50 or over

Retired Active Adults

Enjoying all the years of life

A Newsletter and Schedule for the Significant Adults Ministry

January February Schedule Inside

Greetings from the Significant Adults Ministry (SAM)



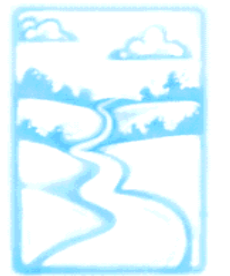
We reflect on last year with gratitude and appreciation for all of our blessings as we also are looking forward to 2012 with great anticipation. We had record attendance at many of our luncheons in 2011

with fun activities, interesting speakers and quite a few presentations from some very talented folks. Rest assured that we are diligently planning for more of the same fun for 2012, too.

We really want to thank everyone who has helped us in any way—those who set up, those who clean up, those who drive, those who pick up food, those who prepare and serve the food, and those who greet. What an awesome team you are! Most of all, we love it when you come and

share your time with us! Whether working or just enjoying lunch. Our SAM luncheon wouldn't be near as fun without you here!

As we all start on this journey of 2012 together, we pray that you will have good health, great times with your family and friends, and a year full of God's love and grace.



The Year Ahead

Blessings for 2012!



First Assembly of God

1400 W. Washington Center Rd.
Fort Wayne, IN 46825 260-490-8585
www.firstassemblyfw.org

Frank & Carol Sitcler
Significant Adults Pastor

